

The TyReX team: `tyrex.inria.fr` (Oct 2020)



Observation: today, most of the effort in building industrial artificial intelligence applications concerns data processing \implies We conduct research in **Data-Centric Programming**

Faculty

A. Bonifati
Prof Lyon 1



N. Gesbert
MdC ENSIMAG



N. Layaida
DR Inria



U. Comignani
MdC ENSIMAG



P. Genevès
DR CNRS, lead

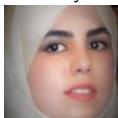


PhD Students

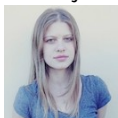
F. Boulmaiz



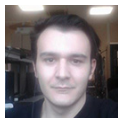
S. Chlyah



A. Fejza



R. Kerkouche



M. Lawal



L. Werner



Engineers

T. Calmant



L. Carcone



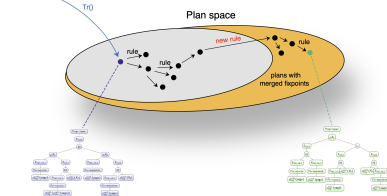
13 people, 7 nationalities, 31% female

TyReX motto

To facilitate programming with large amounts of data, in particular with graphs



Graph query (ex: UCRPQ)



Goals:

- ▶ Push the limits of data processing: query the “impossible” / “unthinkable” / “too expensive”
- ▶ Facilitate value extraction from big data

Research internship topics (excerpt):

- ▶ Data quality and cleaning using a relational algebra with fixpoint (with U. Comignani)
- ▶ Optimization of queries with antiprojections for extracting information from very large graphs