

TyReX: Types and Reasoning for the Web

Pierre Genevès

LIG, CNRS, Inria, Grenoble INP, UGA.
<http://tyrex.inria.fr>

October 3rd, 2019

The TyReX team (Oct 2019)

Faculty

A. Bonifati



N. Gesbert



N. Layaïda



C. Roisin



P. Genevès



Engineers

T. Calmant



L. Carcone

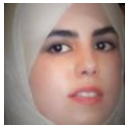


PhD Students

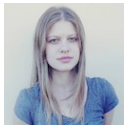
F. Boulmaiz



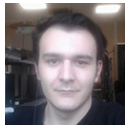
S. Chlyah



A. Fejza



R. Kerkouche



M. Lawal



MSc

L. Werner



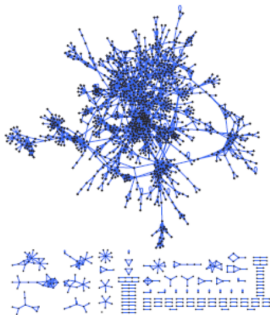
13 people, 7 nationalities, 38% female

Today: most of the effort in building AI applications concerns data processing

“our key observation is that most of the effort in industrial ML applications is not spent in devising new learning algorithms or models but is instead spent in other areas that are especially in need of better tools and infrastructure: data preparation, feature selection and extraction” [Stanford report, 2017]

TyReX motto

To facilitate programming with large amounts of data, in particular with graphs



Goals:

- ▶ Push the limits of data processing: query the “impossible” / “unthinkable” / “too expensive”
- ▶ Facilitate value extraction from big data